



INFLUENZA WATCH LOS ANGELES COUNTY

Los Angeles County (LAC) Reminder: Influenza Watch is now being published every 2 weeks.

Respiratory activity, including influenza and RSV, continued to decrease during weeks 13 and 14. One additional severe pediatric influenza case occurred in week 13 for a total of 8 children who were admitted to the ICU with influenza this season.

Surveillance System Overview

SURVEILLANCE SYSTEM*	Week 14	2008-2009 YTD
Percent Positive Influenza Tests [±]	4.7	5.1
Percent Positive RSV Tests [‡]	5.3	17.2
Percent Flu A / Flu B [±]	36 / 64	80 / 20
Severe Pediatric Influenza Cases [†]	0	8 (0)
Respiratory Outbreaks	0	7
Influenza Vaccines Administered (PH)	--	62,652

*See <http://apublichealth.org/acd/flu.htm> for a description of surveillance methods.

± Sentinel sites (8 participating facilities).

‡ Sentinel sites (4 participating facilities).

†The number of deaths is indicated by the parenthesis.

California

Influenza activity in California was downgraded from **widespread** in week 12 (March 22-March 28) to **regional** in week 13 (March 29-April 4) due to a decrease in reports of influenza-like illness and influenza test results throughout the state.

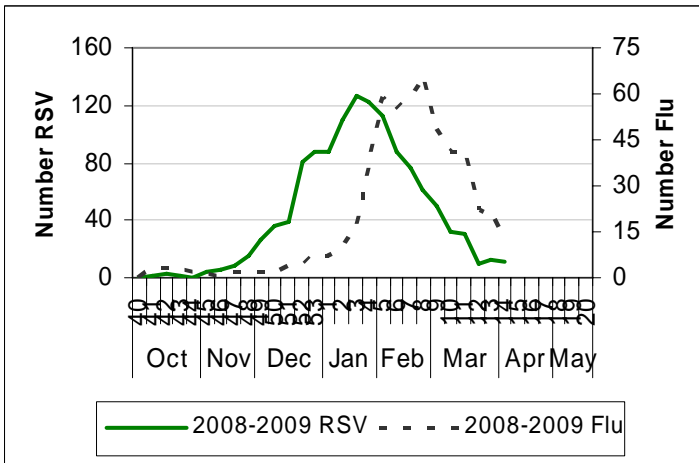
<http://www.cdph.ca.gov/PROGRAMS/VRDL/Pages/>

United States

Nationally, influenza activity continued to decrease during weeks 12 and 13. In week 13, only 4 states reported **widespread** activity, 18 states reported **regional** activity, 20 states reported **local** activity, 7 states reported sporadic activity, and 1 state did not report.

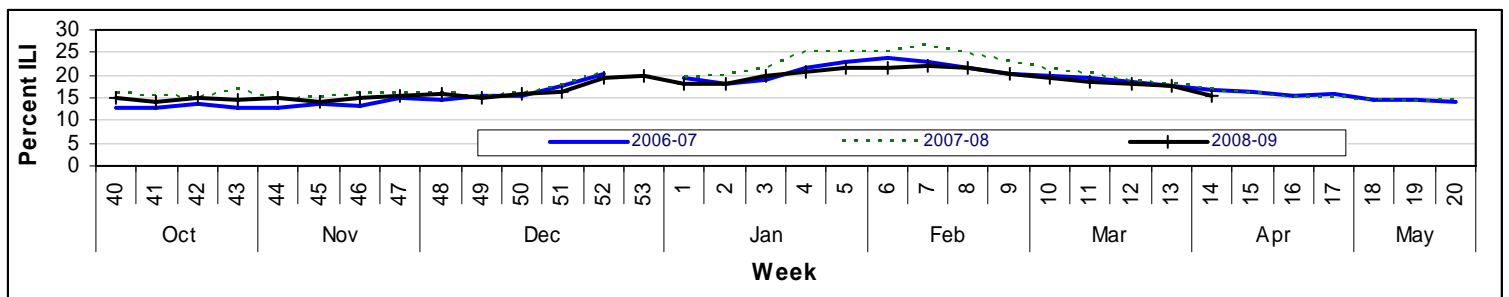
<http://www.cdc.gov/flu/weekly/fluactivity.htm>

Figure 1: Positive Influenza and RSV Tests by Week



RSV data in Figure 1 represent testing completed in four reporting facilities for the 2008-2009 season. Influenza data represent testing completed in nine facilities.

Figure 2: Percent of ED Visits for ILI by Week



In the News

Influenza Vaccination Advised for Travelers to Southern Hemisphere

While influenza season is winding down in the northern hemisphere, it is just beginning in the southern hemisphere where it will continue through September. This season the strains used in the northern hemisphere vaccine are identical to the strains used in the southern hemisphere vaccine. The Advisory Committee on Immunization Practices recommends influenza vaccination for travelers to the southern hemisphere or tropics for which annual vaccination is recommended or who are not in a high-risk group but want to avoid influenza illness and have not yet been vaccinated.

http://www.medscape.com/viewarticle/590523_src=mp&spon=3&uac=19909SY